



COPPER

FREE YOUR MOUNTAIN



2008 COPPER

# ENVIRONMENTAL REPORT



COPPER MOUNTAIN  
**ECOLOGIC**  
connect • respect • protect



COPPER

# CONTENTS



2 | INTRODUCTION



3 | FOREST STEWARDSHIP



4 | ENERGY



6 | NATURAL RESOURCE CONSUMPTION



7 | WASTE REDUCTION



8 | COMMUNITY

# INTRODUCTION

Copper Mountain's environmental efforts are about determining what differences we can make, both right in our backyard, and for the planet. Whether it's Copper employees planting 1,000 Engelmann Spruce saplings or the resort buying wind energy credits to support renewable energies development and research – Copper is focused on taking productive steps toward greater environmental sustainability.

I enjoyed building drainage dips to reduce erosion during one of Copper's Adopt-A-Trail days on the Wheeler Lakes Trail this summer. Copper Executive Chef Justin Peterson continues his efforts to increase recycling in Copper restaurants and reduce paper plate use in our food courts. Jen Schenk, Copper's environmental manager, and Mark Graham, Copper's mechanical maintenance manager, have been jointly researching ways to save energy and comparing renewable energy options for the resort. The point is a simple one - we can all take action in our own lives to get involved in protecting the environment.

A few of Copper's recent environmental initiatives include the following:

- 4.2 kilowatt solar system at the Transportation Center
- Green Globes certification of Woodward at Copper
- Employee support of local youth environmental initiatives

In this year's Environmental Report, you'll see and read about the strides Copper is making as a company, as a community member and as individuals. I'm proud of Copper's accomplishments and the plans we have for the future – and hope our environmental story will motivate others to take action.

Thank you,



Gary Rodgers  
President and COO, Copper Mountain Resort

We can all take action in our own lives to get involved in protecting the environment.



Gary wielding a pulaski during Copper's Adopt-A-Trail Day.



## Copper Employees Adopt a Trail

Copper employees continue their adoption of the popular Wheeler Lakes Trail in the White River National Forest. Groups of employees volunteer to maintain this trail one day each month during the summer in partnership with the Friends of the Dillon Ranger District and U.S. Forest Service. 2008 represents the third year of the program, and noticeable improvements in the trail condition are obvious. The primary goal to reduce erosion is being achieved, and Copper employees enjoy working together on this rewarding project.

### GET INVOLVED

Volunteer during the summer with Copper employees to maintain the Wheeler Lakes Trail.



## Local Forest Conservation

Since 2006, Copper and the National Forest Foundation (NFF) have donated over \$75,000 to local non-profits to complete conservation projects in the Dillon Ranger District of the White River National Forest. Copper's lodging guests voluntarily donate \$1 per room per night, which is then matched at 50% by the NFF. This year's projects include trail maintenance and restoration, and the completion of an important trail connection on the Continental Divide trail.



Copper and the National Forest Foundation have donated over \$75,000 to local non-profits

# FOREST STEWARDSHIP

## One Tree at a Time

Summit County, Colorado and other areas throughout the state are experiencing a mountain pine beetle infestation within lodgepole pine forests. Fortunately, Copper Mountain forests are comprised of a mixed forest of spruce, fir and pine. Therefore, the entire ski area's forests are not affected by the beetles. Copper and the U.S. Forest Service are working together on continued forest health management at the resort. Copper has sprayed 350 trees under the American Eagle and Flyer lifts to prevent infestation of these high-value trees. In addition, Copper is glading a new trail between the Super Bee and Alpine Lifts, and will work to cut infested trees where possible to promote forest health. Finally, the U.S. Forest Service and Copper worked together to plant 1,000 Engelmann Spruce saplings on the mountain this summer.



RESOURCE LINK: Quick facts on Mountain Pine Beetles: <http://www.ext.colostate.edu/pubs/insect/05528.html>



## Solar Power

Copper's first solar project has been installed and will be producing power in the fall of 2008. Photovoltaic panels now line the south-facing roof of Copper's Transportation Center. The 4.2 kilowatt solar system will provide a portion of the electricity for the building. This project demonstrates Copper's support of renewable energy and is a visible part of Copper's overall energy strategy to reduce our carbon footprint and support renewable energy for the future.



*Solar panel array under construction during August 2008.*

# ENERGY

## 100% Wind Powered Through Renewable Energy Credits

Copper purchased 19,157,696 kilowatt hours of renewable energy credits (RECs) from July 2007 through June 2008, the equivalent of 100% of Copper's 07/08 electricity consumption. Copper's REC purchase, facilitated by 3 Degrees, includes electricity used for lift operations, snowmaking and all facilities owned by Copper. Copper has offset its electricity consumption with renewable energy credits since 2006.

**Copper's wind purchase is the equivalent of preventing the release of over 16,000 metric tons of carbon emissions or planting almost 10,000 acres of trees.\***

\*Carbon emissions based on World Resource Institute standards. Tree equivalents calculated using U.S. Climate Technology Cooperation Gateway methodology.



## GET INVOLVED

Switch incandescent bulbs to compact fluorescent bulbs to save 60% energy on lighting.

# Sustainable Development

## Woodward at Copper Green Globes Certification

Copper and Camp Woodward are bringing the innovative instructional practices of Woodward to snowboarding and skiing – debuting Woodward at Copper Winter during the 08/09 ski season. Progressive teaching tools inside the training facility include trampolines, foam pits and resi-pads to allow athletes to push the limits of skiing and riding in a safer

environment before taking their new skills to the slopes of Copper.

Construction of the 19,000 square-foot Woodward at Copper is underway, and the facility will achieve two Green Globes. Green Globes is a third-party green building standards program, which promotes sustainability in building design and construction.

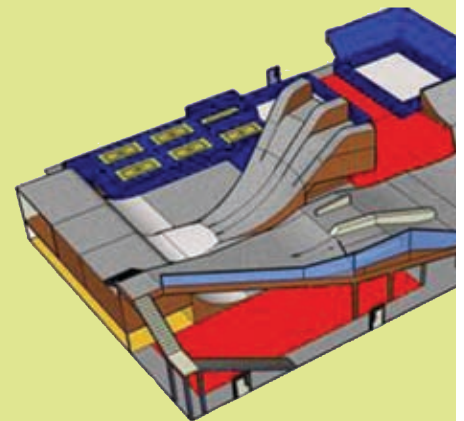
**Woodward’s environmentally sustainable features include the following:**

- ♦ **Energy efficiency including energy recovery ventilation system**
- ♦ **Recycled steel frame**
- ♦ **Flyash concrete**
- ♦ **Sustainable building materials**

## ENERGY



Woodward at Copper Exterior Rendering



Woodward at Copper Interior Rendering

### GET INVOLVED

Use low-VOC (volatile organic compounds) and green cleaning products to create a healthier indoor air environment.

# Energy and Fuel Consumption

Although supporting renewable energy is important, reducing energy and fuel consumption is the most effective way to reduce greenhouse gas emissions. Copper has recently completed energy assessments for all of the facilities it owns to determine areas where energy savings can be implemented. Several years ago, Copper installed energy-efficient lighting in many facilities and implemented energy-saving measures in chairlift engine rooms. Now, Copper is taking a harder look at areas where energy savings can be gained, including implementing operating policies to reduce energy use.

Copper used 19,157,696 kilowatt hours of electricity from July 2007 to June 2008, a 1% decrease from the prior year. Several factors contributed to the relatively flat year-over-year consumption. Colder temperatures than the prior year increased electricity usage in facilities; snowmaking usage was flat because abundant snowfall came after snowmaking needs were achieved during October and November; and efforts to reduce energy consumption after ski season decreased electricity consumption.

Natural gas usage from July 2007 to 2008 was 54,510 MMBTU, a 9%

decrease from the prior year. Copper's diesel and unleaded fuel consumption from July 2007 to June 2008 was 277,839 gallons, a 1% increase over the prior year. Diesel fuel use increased slightly because of operational needs and efforts to provide a better guest experience. Copper continues to operate its three fuel-efficient Cobuses, which are 60% more efficient than the remainder of Copper's bus fleet. The resort also continues to switch its snowmobile fleet from two-stroke engines to more efficient four-strokes; currently 13 of 45 snowmobiles are four-strokes.



Copper's Fuel Efficient Cobus

## NATURAL RESOURCE CONSUMPTION

### Copper Mountain Natural Resource Consumption

	07/08 Usage	06/07 Usage	Annual Change	CO <sub>2</sub> Emissions Conversion	07/08 CO <sub>2</sub> Tons Emissions*	06/07 CO <sub>2</sub> Tons Emissions*
Electricity (kWh)	19,157,696	19,320,121	-1%	.000850 metric tons CO <sub>2</sub> /kWh	16,284	16,422
Natural Gas (MMBTU)	54,510	59,839**	-9%	.0531 metric tons CO <sub>2</sub> /MMBTU	2,894	3,177
Diesel (gallons)	198,968	191,467	4%	.00998 metric tons/gallon	1,986	1,911
Unleaded Gasoline (gallons)	78,871	83,602	-6%	.00887 metric tons/gallon	700	742
Propane	948	2,746	-65%	.00575 metric tons/gallon	5	16
<b>Total</b>					<b>21,869</b>	<b>22,268</b>

Data is from July through June. All conversion factors based on World Resources Institute conversions. \*Renewable energy credits are not included in report as carbon offset, but are still purchased for all electricity consumption. \*\*Natural gas data in last year's report was understated by 2,336 MMBTU because one restaurant's data was not included and has been corrected above.

## 3 Ring Weekend

The Village at Copper hosted 3 Ring Weekend's first eco-friendly event during the 4th of July weekend in 2008. The event featured a sustainable "eco-village", including recycled art installations and hands on activities designed to educate and entertain. In addition, the event was zero-waste and encouraged guests to recycle and compost up to 90% of the waste produced at the event.

"the event was a **zero-waste** event and encouraged guests to recycle and compost up to **90%**"



Executive Chef Justin with his wife Kyle, Conference and Group Services Manager, and daughter Lydia.

## Making a Difference

Justin Peterson, Copper's executive chef, has been instrumental in implementing positive changes at Copper to protect the environment. Justin continues to increase recycling in all of our restaurant kitchens by adding recycling bins and training staff on its importance. In addition, Justin has initiated Copper's replacement of paper plates with melamine plates in three of four of our food courts over the past three years. Justin's passion and commitment to environmental protection are having a positive impact at Copper.

# WASTE REDUCTION

## Copper Mountain Recycling

Copper has recently expanded single-stream recycling to all of our resort-owned restaurant locations. Single-stream recycling allows guests and employees to recycle all materials (except cardboard and scrap metal) into the same recycling bin. Waste Management collects and bales the materials locally, then sorts them at their materials recovery facility in Denver. Copper's landfill diversion rate has increased from 18% to 20%, though the 2007 environmental report incorrectly stated the 06/07 rate as 26% due to a miscalculation.

	06/07	07/08
Recycled Materials	294 tons	253 tons
Trash	1600 tons	1269 tons
Landfill Diversion Rate	18%	20%

## GET INVOLVED

Remember that reduction and reuse are more important than recycling. Use cloth bags instead of plastic and always print/copy double-sided.

# Copper Frisco Environmental Fund

Copper employees, along with the Town of Frisco, founded the Copper Frisco Environmental Fund in 2007. The fund supports local youth environmental projects in Summit and Lake Counties and the surrounding area. The Fund recognizes the great need for classroom environmental programs including recycling, composting and conservation education

programs. Employees may voluntarily give to the fund through tax-deductible, payroll-deducted contributions or through making a one-time donation. The Copper and Frisco Environmental Fund announced its first grant recipients during May 2008. Over \$5,000 was awarded to four projects to support local youth environmental action and education initiatives.

## 2008 Youth Environmental Support

- ♦ Leadville community recycling
- ♦ Reusable bag campaign
- ♦ Day camp youth education and action
- ♦ Scholarships for science and conservation education

# COMMUNITY

## Copper's Future

Copper Mountain is pleased to announce the resort has received approval from Summit County officials to move forward with the next stage of village and base area development. Included in the re-zoning application are 590 units of residential and hotel density, employee and affordable housing, improved parking, transportation and pedestrian flow, perpetual funding for community programs, wetlands and open space creation and construction of a recreation path throughout the resort base area.

Copper's future includes six development parcels within the base area including the existing Chapel Lot as a potential hotel site. The new development will be concentrated in the village center while lower density projects are designated for the West and East neighborhoods. Copper's plan will generate increased traffic and revenue for existing commercial business owners within the village. This is being accomplished with the addition of hotel/condo lodging in

the center of the resort, dedicated commercial parking, an improved transportation system delivering guests to the village core and by limiting the development of new commercial space.

Year-round recreational opportunities are an integral piece of the Copper lifestyle. Copper's future will include minor improvements and changes to the Copper Creek Golf Course. In addition, Copper Mountain is currently constructing Woodward at Copper - a 19,000 square-foot indoor skiing and riding training facility geared toward park and pipe progression - set to open Winter 08/09. Copper Mountain has also dedicated 1.72 acres and \$75,000 to the Copper Mountain Consolidated Metro District for the construction of a new fire station.

Through the process Copper modified the employee and affordable housing strategy to better accommodate resort and community needs, including a 30-unit on-resort affordable housing development.

The Parking and Transportation portion of the plan will allow for a better arrival experience for our guests, while including designated commercial parking. Copper Mountain is also working with its partner, the U.S. Forest Service, on an Environmental Assessment (EA) to expand the Corn Parking Lot. The Corn Lot exists today as part of Copper's parking and transportation system, and the additional parking would be a seamless addition to Copper's system and to help improve the guest arrival and departure experience. In addition, the EA includes a proposal to restore a reach of Tenmile Creek adjacent to the Corn Lot.

